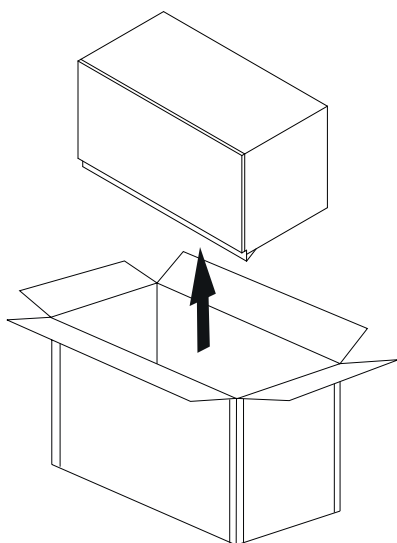
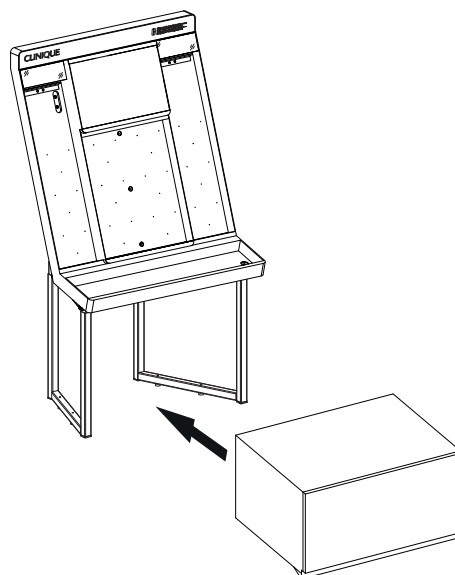


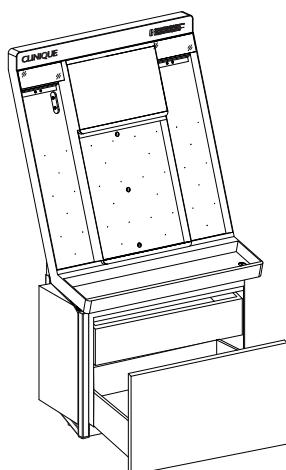
- ① **Ouvrir / Open Ref. V8MC600001
COUNTERSTOCKR**



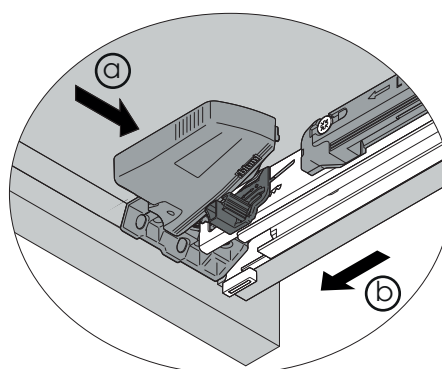
- ② **Mettre STOCK entre les pieds
Put STOCK between the feet**



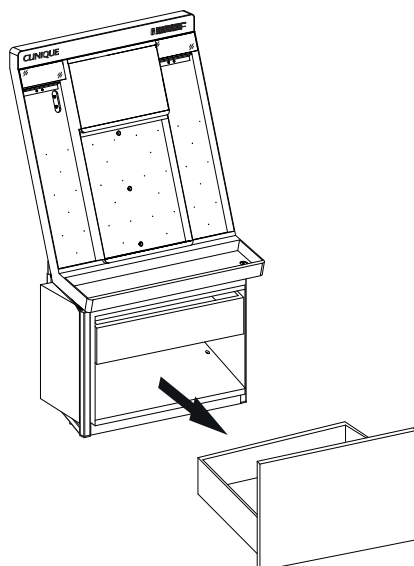
- ③ **Ouvrir le tiroir
Open the drawer**



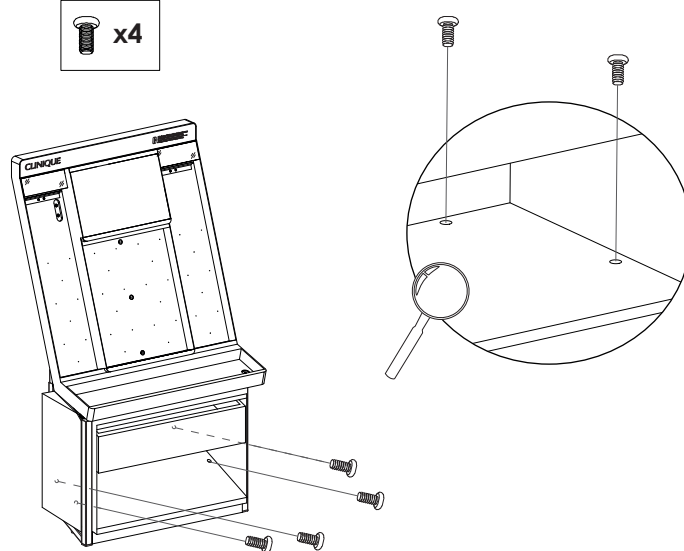
- ④ **Appuyer sur les Glissières et tirer le tiroir
Push on slides and pull out the drawer**



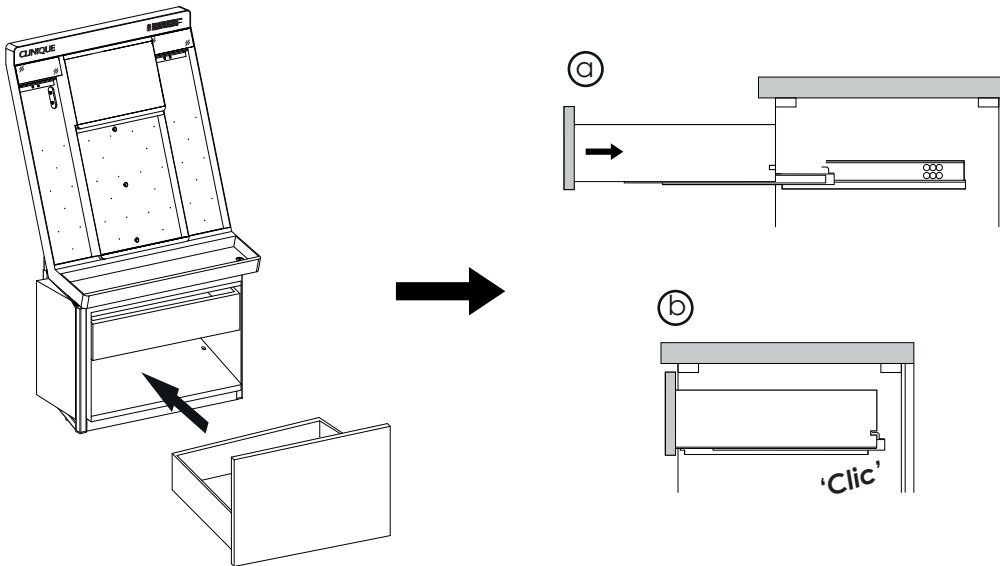
- ⑤ **Enlever le tiroir
Remove the draw**



- ⑥ **Visser le STOCK aux Pieds du TG
Screw the STOCK to the feet of the TG**



⑦ **Remettre le tiroir**
Put the drawer back

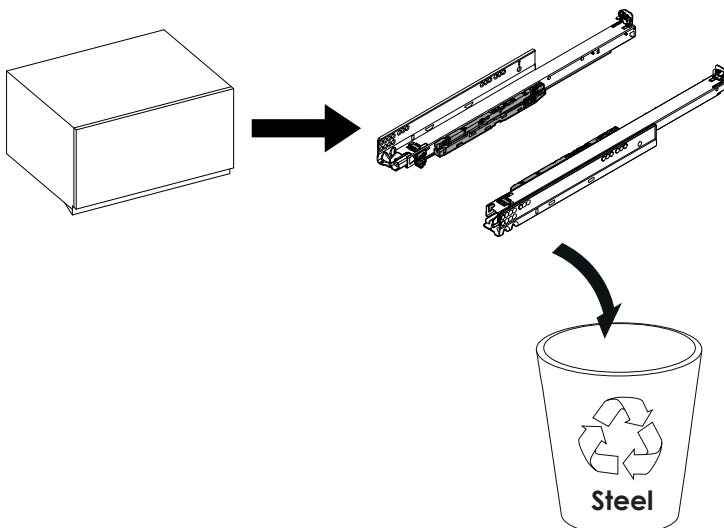


Fin de vie / Recyclage - End of life / Recycling

Materials :

- MDF 95%
- Steel 5%

① **Démonter les coulisses**
Remove the slides



② **Recyclage**
Recycling

